

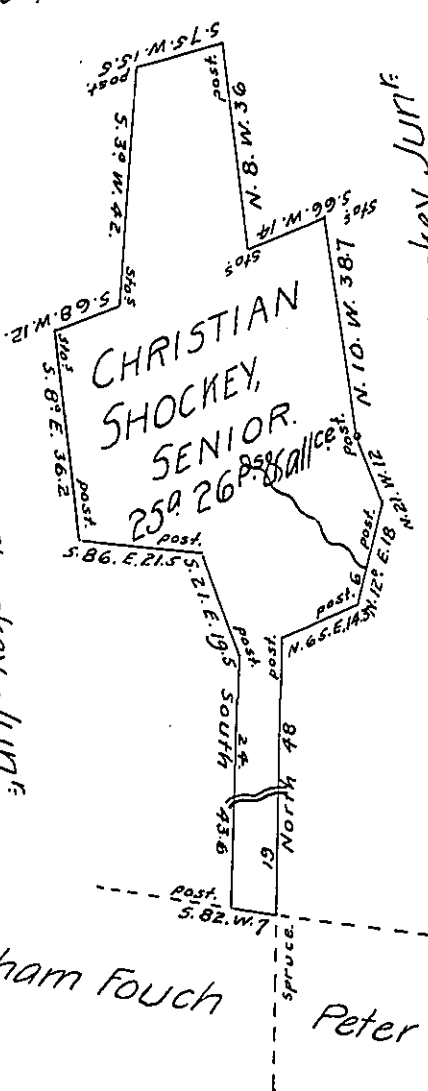
Christian Shockey, Jun<sup>r</sup>

Christian Shockey, Jun<sup>r</sup>

Christian Shockey, Jun<sup>r</sup>

Abraham Fouch

Peter Deel



on a Scale of 40<sup>rs</sup> to the Inch.

Situate in Greenville Township (formerly Elk Lick Township, Somerset County, on the Waters of Pine Run, and Surveyed the 10<sup>th</sup> day of March 1813, in pursuance of a Warrant granted unto Christian Shockey, Senior dated the 9<sup>th</sup> day of January 1813.

John M<sup>c</sup> Clean, Deputy—

To Richard T. Leech, Esquire,  
Surveyor General of Pennsylvania }

Note ~~when~~ when this land was Surveyed the Said Christian Shockey, Sen<sup>r</sup>, and family resided thereon and had a tolerable House and Barn and about 21<sup>a</sup> of Cleared land thereon under good fence &c.

John M<sup>c</sup> Clean—

IN TESTIMONY that the above is a copy of the original remaining on file in the Department of Internal Affairs of Pennsylvania, made conformably to an Act of Assembly approved the 16th day of February 1833, I have hereunto set my hand and caused the Seal of said Department to be affixed at Harrisburg, this twentieth day of December 1906.

*James P. Brown*  
Secretary of Internal Affairs.